

SKID STEER FAMILY

INNOVATIVE DESIGNS

FOR A WIDE RANGE

OF APPLICATIONS



MAJOR APPLICATIONS OF SKID STEER

CONDITIONS

SEVERE DUTY SOLIDS

- Demolition/Construction Sites
- Metal Scrapyards
- Glass Recycling

SEVERE DUTY PNEUMATICS

- Hard Abrasive Yards
- Garbage Scrapyards
- Recycling Facilities

HEAVY DUTY PNEUMATICS

- Rubble Removal
- Construction
- Municipality Works

STANDARD DUTY PNEUMATICS

- Agriculture
- Construction
- Municipality Works

SPECIALITY HEAVY DUTY PNEUMATICS

- Construction
- Agriculture
- Snow removal



REQUIREMENTS

- Resist penetrating debris
- Abrasion resistance
- Zero downtime due to punctures and cuts

SOLUTIONS

- Solid construction
- High tread depth
- Three times life of a pneumatic tire/rim assembly provided

OUR OFFERING



HULK SDS
Industry Leading
Tread Depth



SUPER SMOOTH SDS
Maximized Usable
Rubber Volume



BEEFY BABY SDS
Traction Multi-purpose
Pattern

- Abrasion resistance
- Resist failure due to cuts and chipping
- Minimum downtime/ maximum life

- High solid to void ratio
- Strong sidewall and tread construction
- High tread depth



BOSSMAN GRIPSTEEL II
Steel Belted



HULK
Maximum Tread Depth



KING KONG
Super Severe Mine
Compound

- Multi-purpose multi-shift operations by same equipment
- Work on hard surfaces/ mud/slopes

- Beefy lug pattern
- Wide center tread with large lug overlap



BEEFY BABY III
Higher Tread Depth



BEEFY BABY
OEM Preference

- Multi-purpose operations
- Value for money offering

- Specialized lug pattern
- Optimal tread depth and design



XD 2010
Cascaded Lug Pattern

- Multi-purpose operations
- Built for specific end-user applications



MULTI-USE 550
Maximized footprint and superior ride



HIPPO
Flotation in soft soil and mud






MUDDY BUDDY
High traction in soft soil and mud



MIGHTY TRAC ND
All-season/all-surface tread



MIGHTY MOW
Gentle performance for turf applications

 = Solid  = Pneumatic  = Radial

SEVERE DUTY SOLIDS

GALAXY HULK SDS WITH APERTURES **INDUSTRY-LEADING TREAD DEPTH**

The Galaxy Hulk SDS is extra deep sturdy block pattern which has high solid to void pattern with large central block for long tread wear. Its solid construction eliminates punctures, ensuring maximum uptime and steel wire creel beads prevent rim slippage. It is available with tire + rim assembly (Lock ring/standard heel type) for quick change of tire. Hulk SDS gives maximum tread depth available to provide extended tire life with lowest cost of ownership in the most severe application.



TYPE	PRODUCT CODE	SIZE	ALT. SIZE	SIDE	TYPE	NSD (32NDS)	PREFERRED RIM	OD	WIDTH	RC	SLR	LOAD (LBS)	PSI	SPEED
W/ APERTURE TIRE ONLY	583717	30X10-16	10-16.5	Left	Solid Tire	75	6	30.2	9.5			8085	N/A	5
	583718	30X10-16	10-16.5	Right	Solid Tire	75	6	30.2	9.5			8085	N/A	5
	583719	33x12-16	12-16.5	Left	Solid Tire	80	8	32.7	10.9			10420	N/A	5
	583720	33x12-16	12-16.5	Right	Solid Tire	80	8	32.7	10.9			10420	N/A	5
W/ APERTURE ASSEMBLY	589717	30X10-16	10-16.5	Left	8 ON 8	75	6	30.2	9.5			8085	N/A	5
	589718	30X10-16	10-16.5	Right	8 ON 8	75	6	30.2	9.5			8085	N/A	5
	589719	33x12-16	12-16.5	Left	8 ON 8	80	8	32.7	10.9			10420	N/A	5
	589720	33x12-16	12-16.5	Right	8 ON 8	80	8	32.7	10.9			10420	N/A	5

GALAXY SUPER SMOOTH SDS **MAXIMIZED USABLE RUBBER VOLUME**

The Galaxy Super Smooth SDS offers smooth flat tread for even wear on hard surfaces and eliminates issues of lug cracking. It eliminates breakdown of equipments or sidewall tearing resulting in maximum equipment up-time. It has steel wire creel beads for improved grip with rim and prevention of rim slippage.



TYPE	PRODUCT CODE	SIZE	ALT. SIZE	SIDE	TYPE	NSD (32NDS)	PREFERRED RIM	OD	WIDTH	RC	SLR	LOAD (LBS)	PSI	SPEED
W/ APERTURE TIRE ONLY	590715	31X10-20	10-16.5	NA	Solid Tire	55	7.5	30.7	9.4			7535	N/A	5
	590716	33X12-20	12-16.5	NA	Solid Tire	74	7.5	32.7	11.3			9725	N/A	5
W/O APERTURE TIRE ONLY	591715	31X10-20	10-16.5	NA	Solid Tire	55	7.5	30.7	9.4			7535	N/A	5
	591716	33X12-20	12-16.5	NA	Solid Tire	74	7.5	32.7	11.3			9725	N/A	5
W/ APERTURE ASSEMBLY	597715	31X10-20	10-16.5	NA	8 ON 8	55	7.5	30.7	9.4			7535	N/A	5
	597716	33X12-20	12-16.5	NA	8 ON 8	74	7.5	32.7	11.3			9725	N/A	5
	597709	33x12-20	12-16.5	NA	8 ON 10.75	74	7.5	32.8	11.3			9725	N/A	5
W/ APERTURE ASSEMBLY	598715	31X10-20	10-16.5	NA	8 ON 8	55	7.5	30.7	9.4			4030	N/A	5
	598716	33X12-20	12-16.5	NA	8 ON 8	74	7.5	32.7	11.3			5200	N/A	5

GALAXY BEEFY BABY SDS **TRACTION MULTI-PURPOSE PATTERN**

The Galaxy Beefy Baby Severe Duty Solid is the ideal tire to deliver productivity in harsh environments like waste transfer stations, metal recycling, construction, and demolition sites. The SDS offers up to 40% higher carrying capacity than a pneumatic tire and the confidence of being virtually immune to flats. It is available with tire + rim assembly (Lock ring/standard heel type) for quick change of tire.



TYPE	PRODUCT CODE	SIZE	ALT. SIZE	PR/LI	TYPE	NSD (32NDS)	PREFERRED RIM	OD	WIDTH	RC	SLR	LOAD (LBS)	PSI	SPEED
W/ APERTURE TIRE ONLY	587711	31X10-20	10-16.5	Left	Solid Tire	43	7.5	30.8	9.4			7535	N/A	5
	587712	31X10-20	10-16.5	Right	Solid Tire	43	7.5	30.8	9.4			7535	N/A	5
	587713	33X12-20	12-16.5	Left	Solid Tire	51	7.5	32.7	11.3			9725	N/A	5
	587714	33X12-20	12-16.5	Right	Solid Tire	51	7.5	32.7	11.3			9725	N/A	5
	603927	36X14-20	14-17.5	Left	Solid Tire	89	7.5	35.94	13.7			13600	N/A	5
	587927	36X14-20	14-17.5	Right	Solid Tire	89	7.5	35.94	13.7			13600	N/A	5
W/O APERTURE TIRE ONLY	588711	31X10-20	10-16.5	Left	Solid Tire	43	7.5	30.8	9.4			8860	N/A	5
	588712	31X10-20	10-16.5	Right	Solid Tire	43	7.5	30.8	9.4			8860	N/A	5
	588713	33X12-20	12-16.5	Left	Solid Tire	51	7.5	32.7	11.3			11440	N/A	5
	588714	33X12-20	12-16.5	Right	Solid Tire	51	7.5	32.7	11.3			11440	N/A	5
W/ APERTURE ASSEMBLY	594711	31X10-20	10-16.5	Left	8 ON 8	43	7.5	30.8	9.4			7535	N/A	5
	594712	31X10-20	10-16.5	Right	8 ON 8	43	7.5	30.8	9.4			7535	N/A	5
	594713	33X12-20	12-16.5	Left	8 ON 8	51	7.5	32.7	11.3			9725	N/A	5
	594714	33X12-20	12-16.5	Right	8 ON 8	51	7.5	32.7	11.3			9725	N/A	5
	594732	33X12-20	12-16.5	Left	8 ON 10.75	51	7.5	32.7	11.3			9725	N/A	5
	594734	33X12-20	12-16.5	Right	8 ON 10.75	51	7.5	32.7	11.3			9725	N/A	5
	602927	36X14-20	14-17.5	Left	8 ON 8	89	7.5	35.94	13.7			13600	N/A	5
	596927	36X14-20	14-17.5	Right	8 ON 8	89	7.5	35.94	13.7			13600	N/A	5
W/O APERTURE ASSEMBLY	595711	31X10-20	10-16.5	20 x 7.5	8 ON 8	43	7.5	30.8	9.4			8900	N/A	5
	595712	31X10-20	10-16.5	20 x 7.5	8 ON 8	43	7.5	30.8	9.4			8900	N/A	5
	595713	33X12-20	12-16.5	20 x 7.5	8 ON 8	50	7.5	32.7	11.3			11500	N/A	5
	595714	33X12-20	12-16.5	20 x 7.5	8 ON 8	50	7.5	32.7	11.3			11500	N/A	5

SEVERE DUTY PNEUMATICS

GALAXY HULK L-5 **MAXIMUM TREAD DEPTH**

OEM FITMENT

The Galaxy Hulk has a unique tread pattern that allows it to operate in severe applications while providing superior self cleaning. The Hulk has a minimum tread depth of 44/32nds and a lug-to-void ratio of 68:32. As a result the Hulk will provide long wear and reduce downtime caused by cuts and punctures. It is also built with special cut and chip resistant compounds for durability.



PRODUCT CODE	SIZE	ALT. SIZE	PR/LI	TYPE	NSD (32NDS)	PREFERRED RIM	OD	WIDTH	RC	SLR	LOAD (LBS)	PSI	SPEED
133260	10-16.5		10	TL	44	8.25	31.4	10.2	92	14.4	3500	45	5
133266	12-16.5		12	TL	44	9.75	33	12.1	96	15.1	4220	40	5
133273	33X15.50-16.5		14	TL	44	12	33.1	15.1	100	15.1	4800	35	5
133278	14-17.5		14	TL	46	10.5	36.8	14.1	108	16.8	8550	80	5

GALAXY KING KONG L-4 **SUPER SEVERE MINE COMPOUND**

OEM FITMENT

The Galaxy King Kong L-4 is one of the strongest and most durable skid steer tires on the market. The King Kong has a tread depth of 40/32nds and a 3.5 inch wide lug, and is purpose built for hard surface and rough concrete operations. It is also built with special cut and chip resistant compounds for durability.



PRODUCT CODE	SIZE	ALT. SIZE	PR/LI	TYPE	NSD (32NDS)	PREFERRED RIM	OD	WIDTH	RC	SLR	LOAD (LBS)	PSI	SPEED
132260	10-16.5		10	TL	40	8.25	30.9	10.2	95	14.2	3500	45	5
132266	12-16.5		12	TL	40	9.75	32.7	11.6	100	15	4220	40	5

PRIMEX BOSSMAN GRIPSTEEL II L-4+ **STEEL BELTED**

The Primex Bossman Gripsteel II is a steel belt reinforced severe service tire for industry-leading tread stability and penetration resistance. The tire is designed with extra-deep tread and a large center block which helps it to resist skid wear.



PRODUCT CODE	SIZE	ALT. SIZE	PR/LI	TYPE	NSD (32NDS)	PREFERRED RIM	OD	WIDTH	RC	SLR	LOAD (LBS)	PSI	SPEED
138261	10-16.5		12	TL	34	8.25	30.2	10.3	92	13.9	3500	45	5
138267	12-16.5		14	TL	44	9.75	33.9	12.2	101	15.1	4220	40	5



HEAVY DUTY PNEUMATICS

GALAXY BEEFY BABY III R-4 HIGHER TREAD DEPTH

OEM FITMENT

The Galaxy Beefy Baby III has an advanced new design with almost 10% deeper tread than its predecessor, the Beefy Baby II. It has a flatter tread profile due to the tread overlap and the amount of rubber in the center of the tread. The shallower angle of the lug in the shoulder provides increased traction and the terracing between the lugs promotes self cleaning. Galaxy's signature rim shield has also been enhanced in the Beefy Baby III design.



PRODUCT CODE	SIZE	ALT. SIZE	PR/LI	TYPE	NSD (32NDS)	PREFERRED RIM	OD	WIDTH	RC	SLR	LOAD (LBS)	PSI	SPEED
112259	10-16.5		8	TL	26	8.25	30.9	10.2	92	14.2	3500	45	5
112260	10-16.5		10	TL	26	8.25	30.9	10.2	92	14.2	3500	45	5
112264	12-16.5		10	TL	28	9.75	32.6	11.8	94	14.6	4220	40	5
112266	12-16.5		12	TL	28	9.75	32.7	12	95.4	14.8	4220	40	5
112278	14-17.5		14	TL	30	10.5	36.3	13.7	107.5	16.5	8540	80	5

GALAXY BEEFY BABY R-4 PREFERRED BY OEM

OEM FITMENT

Machinery owners, renters, dealers, and OEMs alike agree that the Galaxy Beefy Baby R4 is one of the "beefiest" and best performing R-4 design skid steer tire on the market, making it the standard by which all other skid steer tires are measured. This hard-won reputation was earned over many years of service thanks to the Beefy Baby's durable wear resistant compound, superior tread design, super sidewall, and rim shield protector.



PRODUCT CODE	SIZE	ALT. SIZE	PR/LI	TYPE	NSD (32NDS)	PREFERRED RIM	OD	WIDTH	RC	SLR	LOAD (LBS)	PSI	SPEED
100259	10-16.5		8	TL	24	8.25	31.1	10.4	93	14.4	3500	45	5
100260	10-16.5		10	TL	24	8.25	31.1	10.4	93	14.4	3500	45	5
100264	12-16.5		10	TL	26	9.75	32.8	12.2	97	15.1	4220	40	5
100276	14-17.5		10	TL	28	10.5	36.7	13.5	108	16.8	6850	55	5
100278	14-17.5		14	TL	28	10.5	36.7	13.5	108	16.8	8540	80	5
100285	10.5/80-18		10	TL	32	9	36.5	10.8	108	16.6	4300	54	25
100287	12.5/80-18		10	TL	35	9	38.9	12	117	17.7	3750	45	25
100289	12.5/80-18		14	TL	35	9	39.3	12.1	118	17.8	4400	48	25
100297	15-19.5		14	TL	29	11.75	38.7	15.7	117	17.7	10060	70	5
100897	15-22.5		12	TL	32	11.75	42.9	15.2	122.8	19.4	9650	70	5
100896	15-22.5		16	TL	32	11.75	42.9	15.2	125	19.6	14151	112	5
100372	15-22.5		20	TL	32	11.75	42.9	15.2	122.8	19.4	13600	105	5
100374	18-22.5		18	TL	34	12.25	46.1	17.8	132.2	20	9480	75	5

STANDARD DUTY PNEUMATICS

GALAXY XD2010 R-4 CASCADED LUG PATTERN

OEM FITMENT

The Galaxy XD 2010 has a solid center for long, even wear on hard surfaces. The deep, open shoulders are designed for traction off-road, and are made with a highly abrasion resistant tread compound. The tire features a heavy sidewall and rim guard. The casing was designed with a neutral contour, which means that the uninflated and inflated shapes are virtually identical. This results in minimum distortion and stresses on the inflated tire, which enhances both reliability and tread wear. The XD 2010 is also widely used by many original equipment manufacturers.



PRODUCT CODE	SIZE	ALT. SIZE	PR/LI	TYPE	NSD (32NDS)	PREFERRED RIM	OD	WIDTH	RC	SLR	LOAD (LBS)	PSI	SPEED
111026	570-12		4	TL	16.4	5JA	22.4	5.9	69.7	10.6	1450	60	5
111833	23x850-12		8	TL	16	7JA	22.6	8.4	65.9	10.2	2105	65	5
111858	23x850-12		12	TL	16	7JA	22.6	8.4	65.9	10.2	2756	100	5
111142	27X850-15		8	TL	16	9.75	32.3	11.6	79.6	15	4800	49	5
111152	27x1050-15		8	TL	18	8	27.2	10.2	80.9	12.6	3080	60	5
111258	10-16.5		6	TL	22	8.25	30.3	10	90	14	3500	45	5
111259	10-16.5		8	TL	22	8.25	30.3	10	90	14	3500	45	5
111260	10-16.5		10	TL	22	8.25	30.3	10	90	14	3500	45	5
111254	12-16.5		6	TL	22	9.75	32.3	11.6	97	15	4220	40	5
111264	12-16.5		10	TL	22	9.75	32.3	11.6	97	15	4220	40	5
111266	12-16.5		12	TL	22	9.75	32.3	11.6	97	15	4220	40	5
111273	33x1550-16.5		14	TL	22	12	33	15.5	95.6	14.8	7480	70	5
111276	14-17.5		10	TL	24	10.5	36.3	13.7	109.1	16.5	6845	55	5
111278	14-17.5		14	TL	24	10.5	36.3	13.7	109.1	16.5	8540	80	5
111297	15-19.5		14	TL	27	11.75	40.1	15.3	120.8	18.3	10064	70	5

SPECIALTY HEAVY DUTY PNEUMATICS

GALAXY MIGHTY TRAC ND L-4 ALL-SEASON/ALL-SURFACE TREAD

The Mighty Trac ND is the all-season, all-surface specialist. It's unique block-type tread gives your skid steer just as much traction and performance in reverse as it does in forward; every aspect of the lug pattern is designed to make sure your wheels aren't spinning.



PRODUCT CODE	SIZE	ALT. SIZE	PR/LI	TYPE	NSD (32NDS)	PREFERRED RIM	OD	WIDTH	RC	SLR	LOAD (LBS)	PSI	SPEED
148260	10-16.5		10	TL	38	8.25	31.4	10.2	92	14.4	3500	40	5
148266	12-16.5		12	TL	43	9.75	33	12.1	98	15.1	4220	40	5
148378	14-17.5		14	TL	50	10.5	36.3	13.7	108	16.5	8540	80	5

GALAXY MUDDY BUDDY R-4 SUPER-DEEP TREAD

OEM FITMENT

The Galaxy Muddy Buddy is a new skid steer tire with a super deep R-4 tread. The Muddy Buddy has 55% deeper tread than conventional R-4 skid steer tires which results in longer wear on rough concrete and makes it ideal for use on soft soil where high traction is required.



PRODUCT CODE	SIZE	ALT. SIZE	PR/LI	TYPE	NSD (32NDS)	PREFERRED RIM	OD	WIDTH	RC	SLR	LOAD (LBS)	PSI	SPEED
144259	10-16.5		8	TL	42	8.25	30.7	10	91	13.9	3500	45	5
144264	12-16.5		10	TL	45	9.75	32.7	11.9	96	14.7	4220	40	5
144278	14-17.5		12	TL	46	10.5	36.3	13.7	107.5	16.5	8540	80	5

GALAXY HIPPO R-4 FLOTATION SIZES

OEM FITMENT

The Galaxy Hippo R-4 is designed for performance in soft and wet soil conditions. The tires are designed for operation in conditions where extra flotation is required and, in many cases can eliminate the need for expensive and cumbersome tracks.



PRODUCT CODE	SIZE	ALT. SIZE	PR/LI	TYPE	NSD (32NDS)	PREFERRED RIM	OD	WIDTH	RC	SLR	LOAD (LBS)	PSI	SPEED
130174	31X15.50-15		8	TL	23	13	31	15.2	95	14.4	4540	40	5
130270	31.5X13.00-16.5		10	TL	24	9.75	31.5	12.8	95	14.4	3640	30	5
130272	33X15.50-16.5		12	TL	26	12	32.6	15.2	96	14.6	4940	35	5

GALAXY MIGHTY MOW R-3 GENTLE PERFORMANCE FOR TURF APPLICATIONS

OEM FITMENT

The Galaxy Mighty Mow is engineered to provide superior flotation resulting in a turf friendly tire that will not damage grass or roots. The Mighty Mow works exceptionally well on equipment for lawns, parks, golf courses, playing fields, and cemeteries.



PRODUCT CODE	SIZE	ALT. SIZE	PR/LI	TYPE	NSD (32NDS)	PREFERRED RIM	OD	WIDTH	RC	SLR	LOAD (LBS)	PSI	SPEED
135259	10-16.5		8	TL	18	8.25	30.7	10.4	93	14.2	3500	45	5
135266	12-16.5		12	TL	17	9.75	32.8	12.5	99	15	4189	40	5
135274	14-17.5		6	TL	21	10.5	35.9	13.3	105	16.1	8550	30	5

MAXIMUM CARRYING CAPACITY AND AIR PRESSURE

Load and pressure values above reflect those needed to create the optimum footprint. For maximum load carrying capacity see this table.

10-16.5	8 PR	4140@60 PSI
10-16.5	10 PR	4710@75 PSI
10-16.5	12 PR	5240@90 PSI
12-16.5	10 PR	5600@65 PSI
12-16.5	12 PR	6320@80 PSI
12-16.5	14 PR	6780@90 PSI

ALLIANCE MULTI-USE 550

THE ALL-IN-ONE RADIAL STEEL-BELTED PERFORMER

Alliance is proud to present the MultiUse 550 series – our uniquely-treaded multiuse tire that is just as durable on hard surfaces as it is effective in soft conditions, snow, sand and more. Whether it's for mowing, utility work, plowing snow, the Alliance MultiUse 550 is designed to deliver exceptional performance, superior ride and reliability for construction, municipal and agricultural operators day in and day out.

PRODUCT CODE	SIZE	PR/LI	TYPE	NSD (32NDS)	PREFERRED RIM	OD	WIDTH	RC	SLR	LOAD (LBS)	PSI	SPEED
55000040	265/70R16.5	130A2	TL	29	8.25	30.4	10.5	92.3	13.7	4180	58	5
55000012	305/70R16.5	144A2	TL	30	9.75	32.8	12.0	97.2	14.7	6130	58	5

TREAD
Steel belted tread area helps reduce punctures in the field and gives a larger, more even footprint

CENTER OF TREAD
“S” design block provides a smoother ride on hard surfaces and at high speeds

FOOTPRINT
More rubber on the ground creates a larger footprint and minimizes soil compaction

SIDEWALL
Special compound improves wear and ride performance in all operating conditions

BEAD AREA
Strong bead construction allows for stability and performance on hillsides



THE RADIAL FOOTPRINT ADVANTAGE

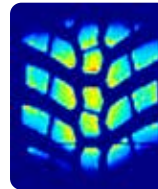
IT'S LARGER

- Increased footprint improves the contact area which implies the radial tire will have more surface contact than a corresponding bias tires and hence improve traction, reduces slippage and therefore improve productivity of the equipment
- Unique tread design offers a large footprint which increases tire life and better even tread wear

IT'S RECTANGULAR

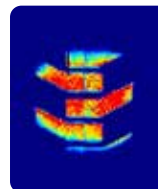
- Steel belts provide a more rectangular flat footprint to disperse load equally across the tread face
- Unique tread design offers less vibrations and superior ride quality
- Radial construction means longer tread life, better traction, higher productivity and less equipment bucking

FOOT PRINT COMPARISON



RADIAL- 305/70R16.5

- Wider rectangular footprints
- Greater surface contact area
- Greater sidewall deflection for smoother ride



BIAS- 12-16.5

- Bias tire has a circular footprint
- Smaller surface area contact
- Stiffer sidewall construction

VISIT YOKOHAMA-OHT.COM FOR DETAILED LOAD AND PRESSURE TABLES

Distributor:

Yokohama Off-Highway Tires (YOHT) is a division of The Yokohama Rubber Co., specializing in Agriculture, Forestry, Construction, Industrial, Material Handling, Earthmoving, Mining, Port and other commercial tires. YOHT sells its diverse product range, consisting of over 4,000 SKUs, in over 120 countries through its subsidiaries and channel partners. YOHT products are engineered to be application-specific and purpose-built. For more information visit www.yokohama-oht.com or email us at info@yokohama-oht.com.



Contact Yokohama Off-Highway Tires America, Inc. at (800) 343-3276 or (339) 900-8080 for your nearest Yokohama OHT Tire Dealer.

[facebook.com/yokohamaohta](https://www.facebook.com/yokohamaohta)

[@yokohamaohta](https://twitter.com/yokohamaohta)

yohta-blog.yokohama-oht.com

[yokohama-oht.com](http://www.yokohama-oht.com)